

wd200-Modellbau.de

Products

2008

Z-drive



- **Length: 183mm, height: 163mm (weight :740g)**
- **Propshaft 6,35mm (Prop diameter max.88mm)**
- **screw thread M 6**

***A stylish combination between a „real Z-drive“ and a direct drive.
The mirrorplate is adjustable(milling,grinding) with a bevel about 12°***

Price: 172€

Steerable Drive



- **Length: 233mm(180mm beginning „propzone) height:120mm**
- **Steering plate wide:72mm**
- **Weight: 500g**

Usable as a single or dual drive.Max. steering angle 11°

Ball bearing at the mounting plate.

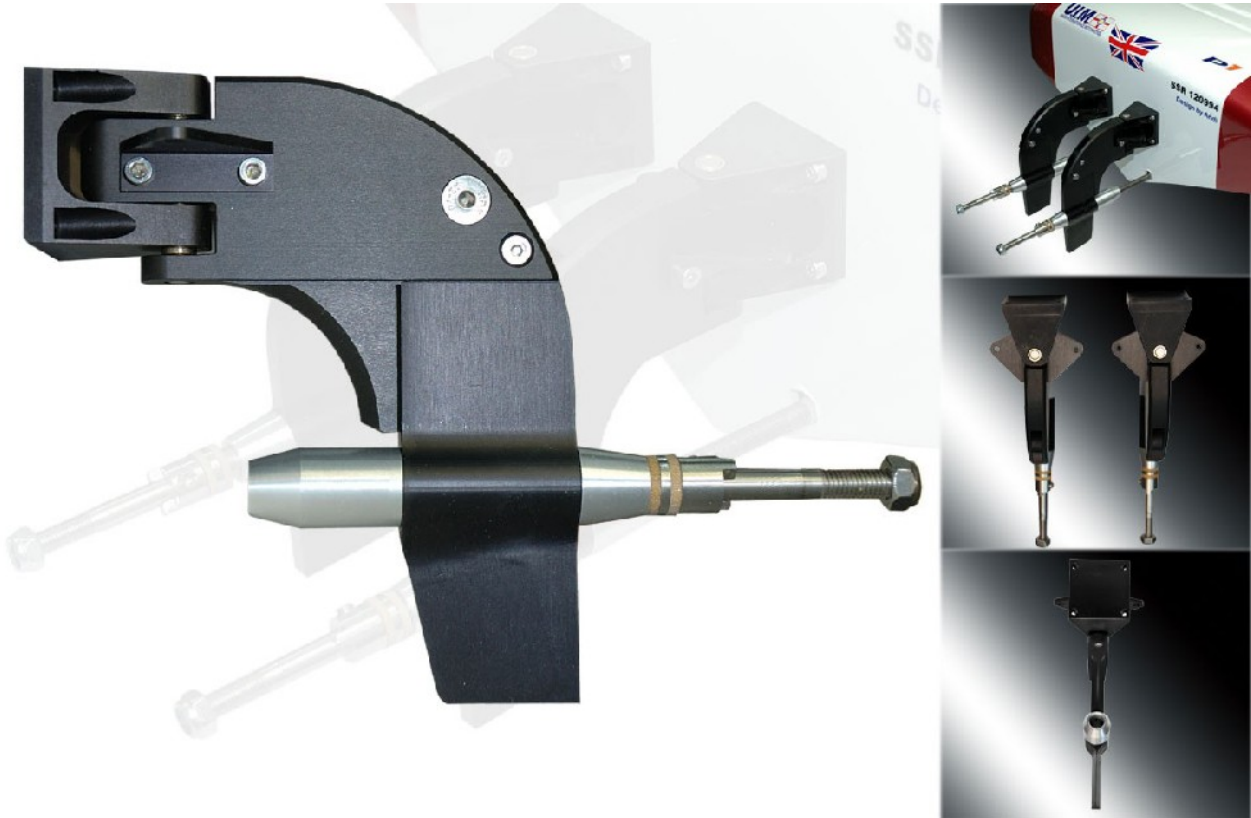
Servo minimum 18Kg !!!

Set includes one pair hydraulic imitations.

Price (single) : 218€

Price(dual with a shortable connection axis) : 379€

Movable strut



- **Length: 130mm ,Height:120mm ,weight 260g**

„Little brother“ of the z-drive.Drivable for powerboats with a length between 120cm-180cm.

Driveable as a single or a dual drive.

Price: 138€

Gearbox one



- **Length: 115mm ,heigth :56mm, weight: 800g**
- **gearbox clutch combination(Design by Dipl.-ing Thomas Marx)**
- **built for chung yang or zenoah 26ccm or 2 cylinder or tuned engines.**

Gear reduction 1:1 with counterrotate (Inside or outside)

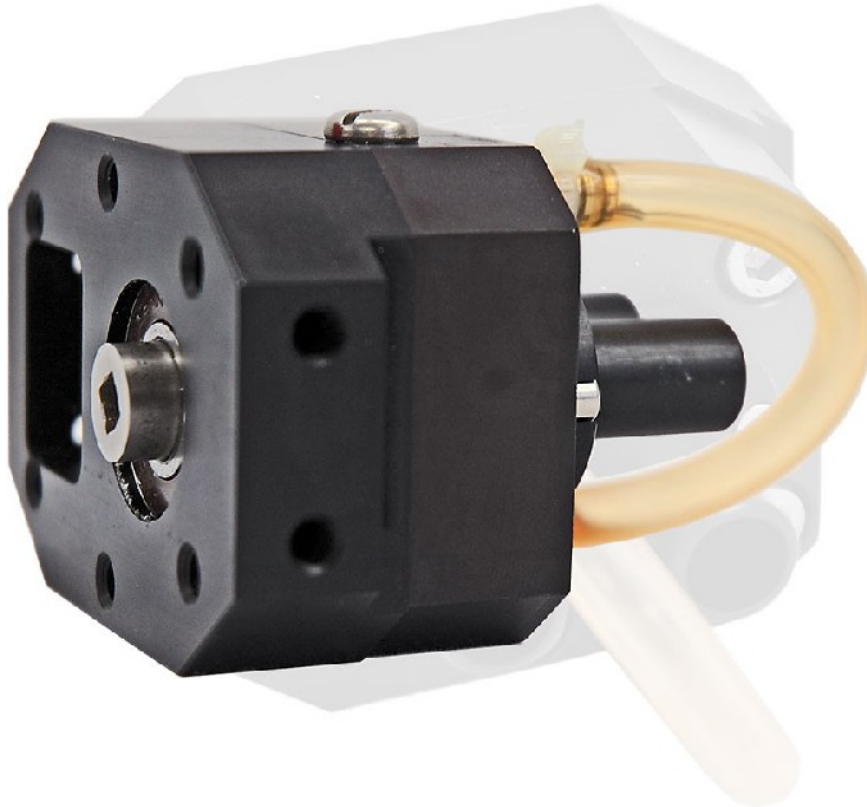
Usable as a reversal gearbox for big cats or mono hulls.

Driveshaft „eroded“ square end for special flex cables (MHZ1093 or 1094/R)

detailed owners manual (german,english) included on cd

Price: 286€

Gearbox TWO



- **Length: 65mm , height: 50mm ,wide:75mm , weight:400g**
- **Standalone version of the gearbox one(light weight)**
- **usable also for e powered raceboats or gas boats**

Driveshaft „eroded“ square end for special flex cables (MHZ1093 or 1094/R)

(Also the input of the gearbox)

Price: 210€

Design cool hats for chung-yang (26ccm)



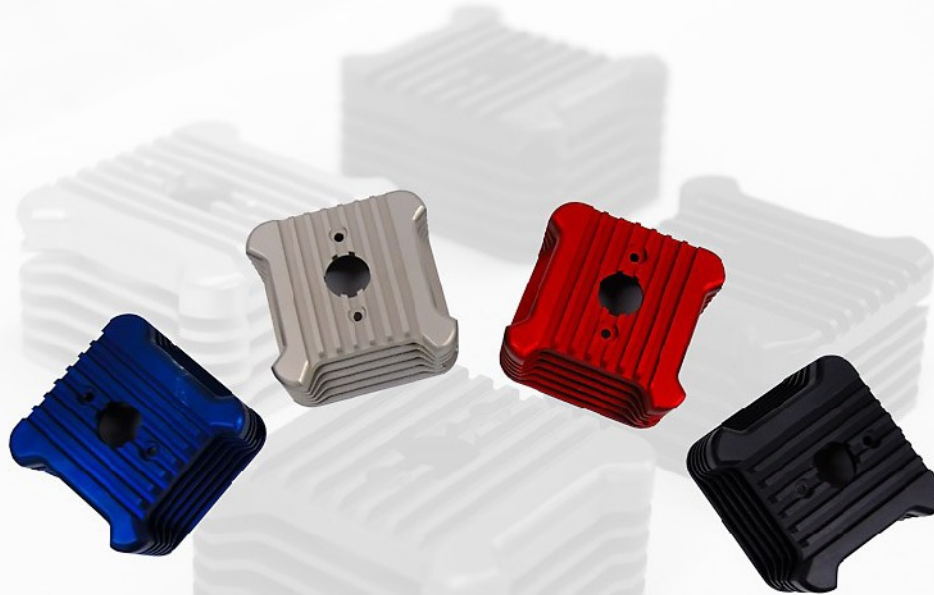
W0200-MODELLBAU.DE

- ***Stylish cooling hat (grinding alloy) available in three different colors.
(raw alloy ,silver or black anodized)***
- ***cylinder and cooling fins are covered***
- ***Simply change the original hats to the design hat.***
- ***Delivery with M5 cooling nipples.***

Price (Raw alloy) : 50€

Anodized: black or silver 54€

Design cool hats for zenoah (26ccm)



W0200-MODELLBAU.DE



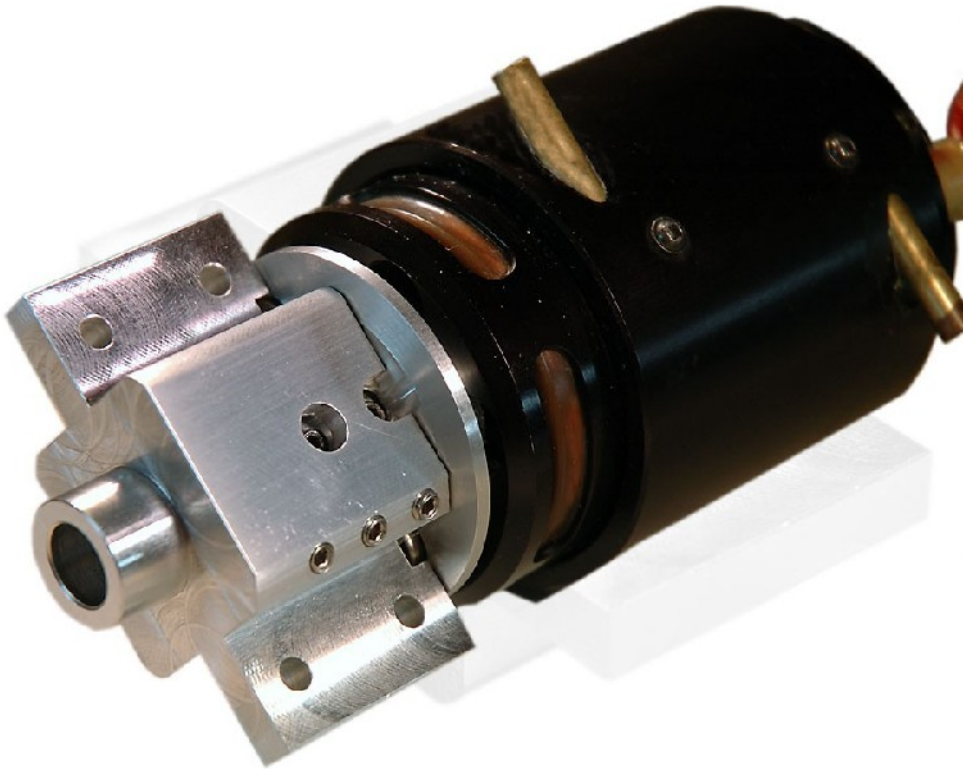
- ***Stylish cooling hat (grinding alloy) available in five different colors.
(raw alloy ,silver , black,red or blue anodized)***
- ***cylinder and cooling fins are covered***
- ***Simply change the original hats to the design hat.***
- ***Delivery with M5 cooling nipples.***

Price (Raw alloy) : 50€

Anodized: black , silver 54€

red or blue :60€

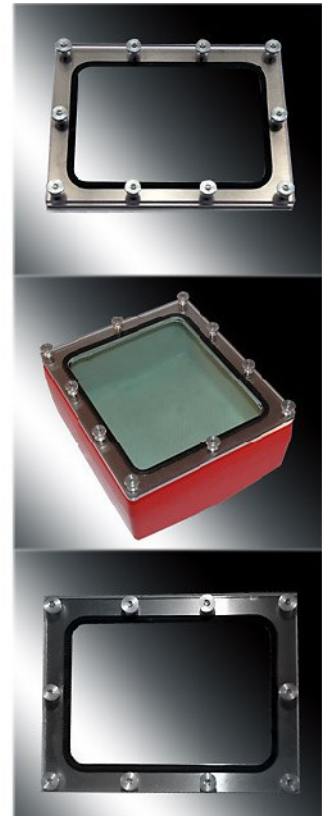
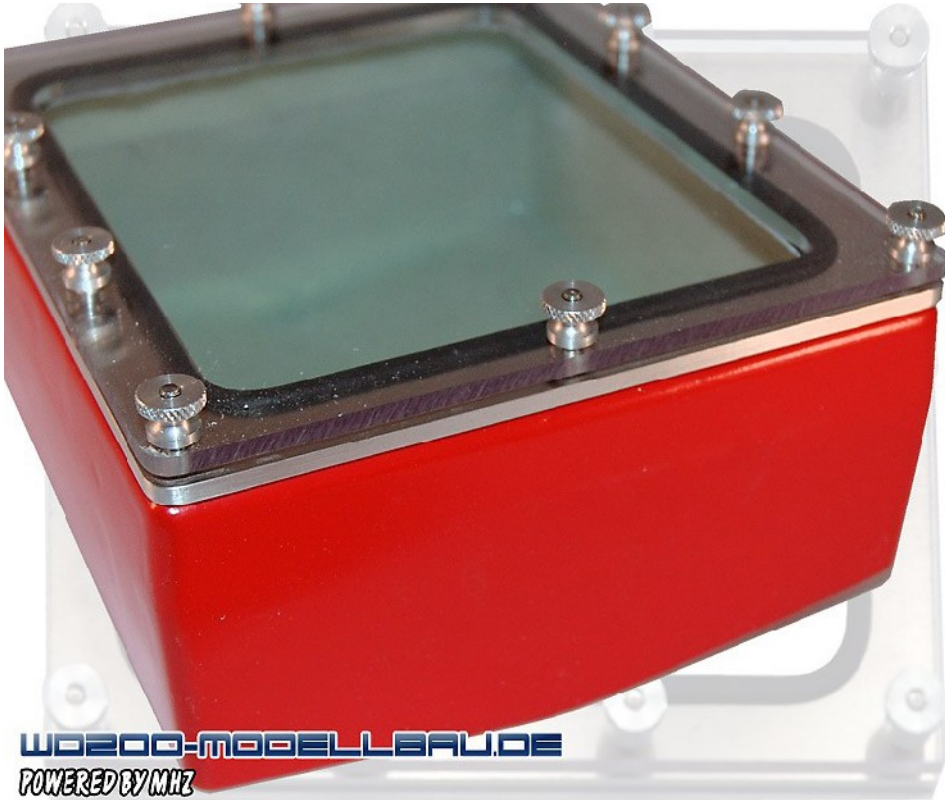
Quick component adaptor for electric motors



- **Usable for e engines with a 30mm mounting diameter (Plettenberg 370/50/A1S or Lehner 30 series or different engines)**
- **Set included: Two mounting parts for the boat and one „faceplate“ for the engine.**
- **Saves a lot of money: One engine and controler and TWO boats.**

Price: 57€

custom built rc box frames



- **Alloy built (4mm) complete package with screws ,gasket,and clear transparent coverage.**
- **All sizes available**

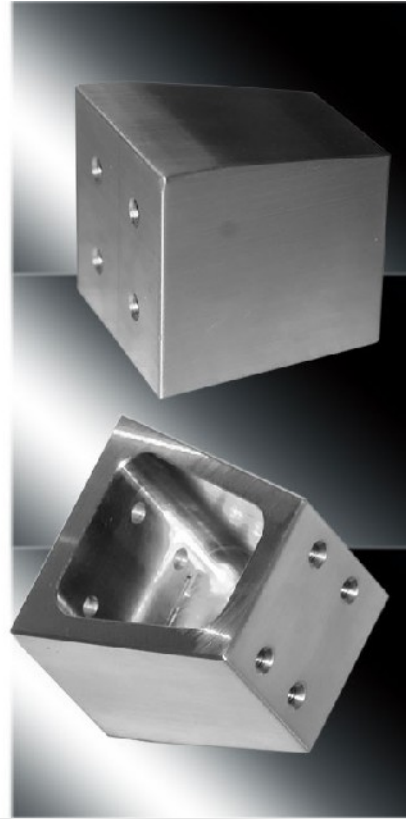
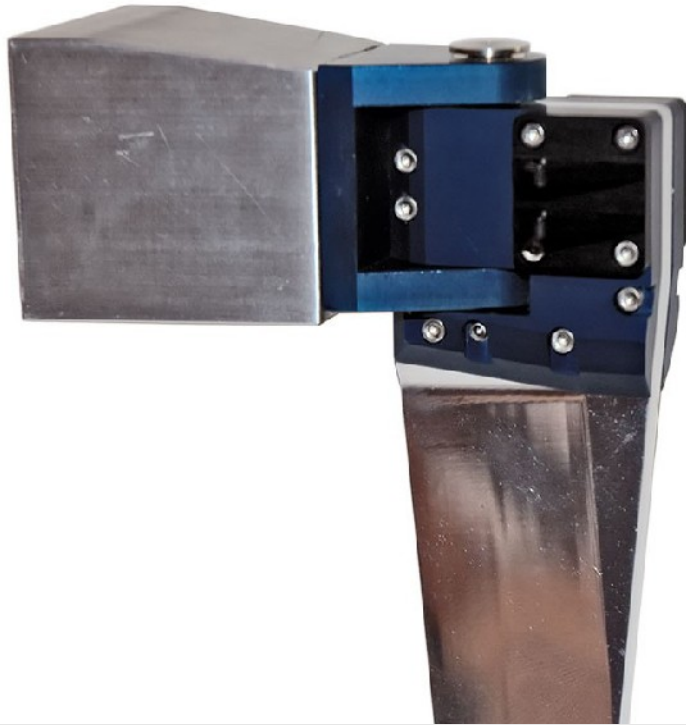
Price: Size max: 140mm*160mm 26,90 €

Size max: 160mm*200mm 29,50€

Bigger size please call !!!

(custom builds delivery time ca. 3 weeks)

Rudder adaptor



- **Length:45mm , height(front) 42mm,height(back) 37mm**
- **wide(front)46mm ,wide(back)33mm**
- **Rudder adaptor for boats without mounting bracket.**

Alloy(raw) paintable !!

Price: 24€

Scale rudder middle



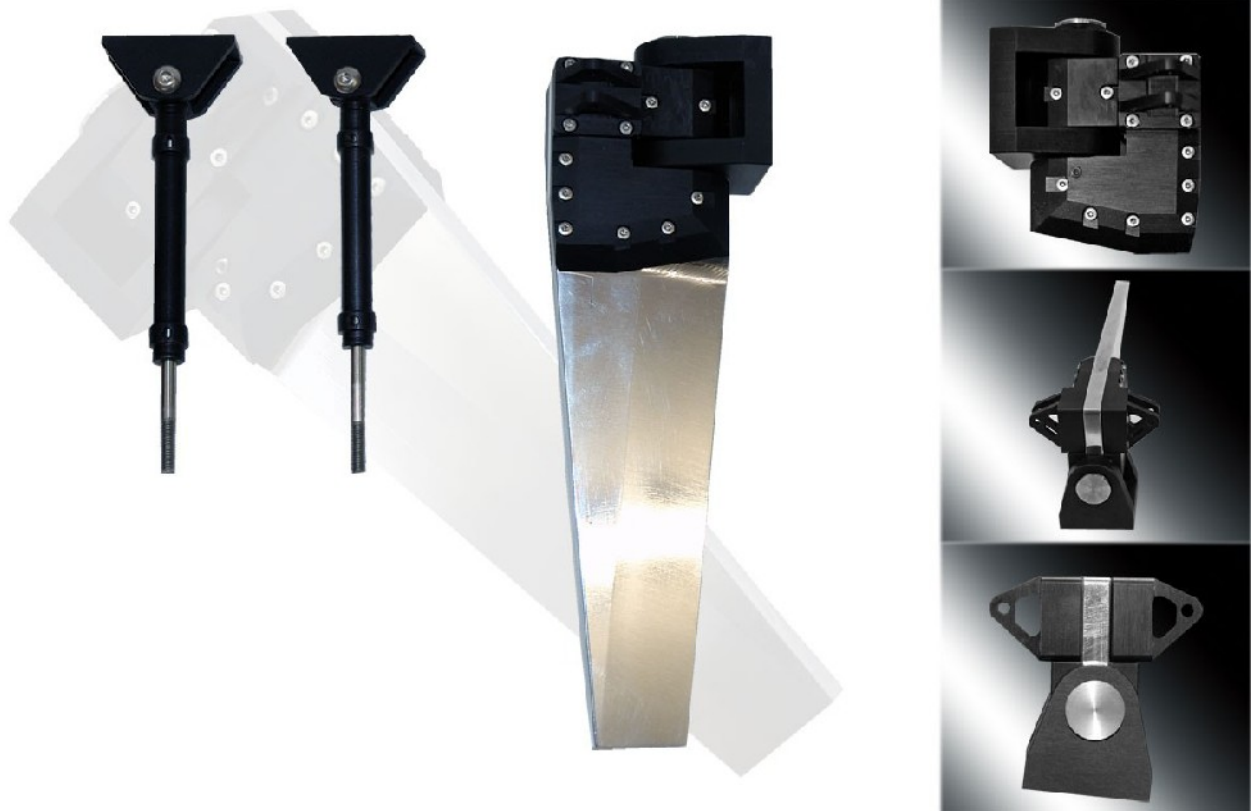
- **Perfect design rudder for hulls >140cm (Static rudderblade)**
- **length: 48mm ,height :156mm ,rudderblade length:105mm**
- **Weight:185g**
- **Complete package with hydraulic imitations .**
Available in black anodized.
Rudderblade polished !

Price: 180€

- **There is also a special edition available black+blue anodized**
(You can see it on rudder adaptor description)
Only 2 in stock !!
Designed for the „victory“ hulls from dubay.

Price for the special edition : 195€

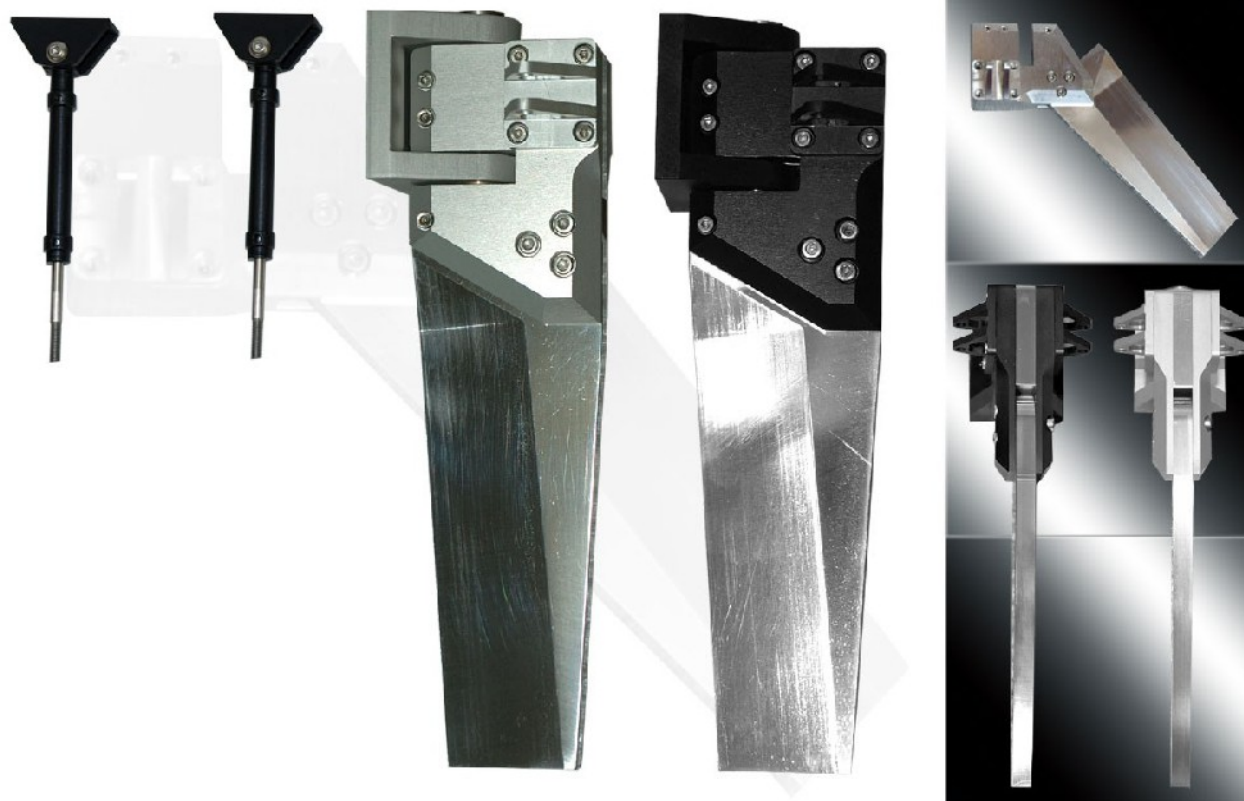
Scale rudder big



- **Perfect design rudder for hulls >190cm
(Static rudderblade)**
- **length: 56mm ,height :190mm ,rudderblade length:125mm**
- **Weight:335g**
- **Complete package with hydraulic imitations .**
- **Available in black anodized.**
- **Rudderblade polished !**

Price: 210€

Scale rudder 38



- **Specialdesign rudder for hulls >140cm**
- **(movable rudderblade)**
- **length: 52mm ,height :160mm ,rudderblade length:125mm**
- **Weight:335g**
- **Available in black or silver anodisized.**
- **Rudderblade polished !**

Price: 158€

Price hydraulik imitations black or silver: 34€

Hull transport covers



- **Covers for saver transport**
- **Syntetic material (Industrial standart)with rubber foam,backside open.**
- **A lot of templates for different hulls are available.(Please call !!)**

Price > 135c1: 46€

Price > 185c1: 52€

Price > 250 c1: 61€

Covers for big airdo1es: + 12€

Custo1 built delivery ti1e ca.3 weeks

Copyrights

The content and works provided on these catalog +Web pages are governed by the copyright laws of Germany. Duplication, processing, distribution, or any form of commercialization of such material beyond the scope of the copyright law shall require the prior written consent of its respective author or creator.

Info:Please visit my website:<http://www.wd200-modellbau.de/> for additional informations.(shipping costs ,paypal prices and news)

Werner Dieckmann (WD200-Modellbau.de) 28.09.08